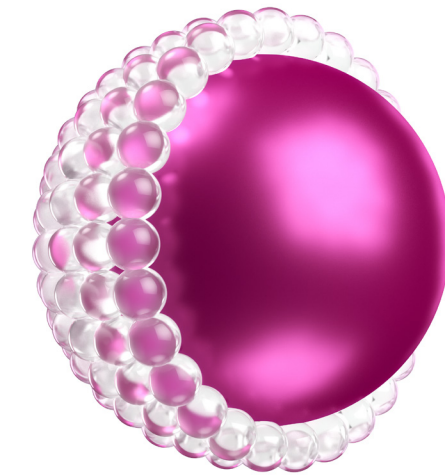


dermalogica 1535 Beachey Place Carson, CA 90746			
job # 36770	description AREC Training Manual		
sku 5428-00	upc	software InDesign CC '15	template
trim size 14" x 8.25"	final size 7" x 8.25"	created 05.09 MB	updated
bleed yes	sides 2-sided		
stock/weight Cover: 111# Pacesetter Silk Cover Inside: 80# Pacesetter Silk Dull Book	finish/coating Satin AQ		
notes book fold and saddle stitched			
Vendor may not make changes to the art provided without written approval of the Creative Department			



tougher on fine lines.
easier on the eyes.

new age reversal eye complex

professional.dermalogica.com
800-831-5150 in the USA
Dermalogica, Dist.
Los Angeles, CA 90009 USA
Europe: London KT22 8JB UK
Dermalogica (Canada) Ltd.
Canada: Toronto, ON M5V 2T3
Australia: Crows Nest, NSW 2065

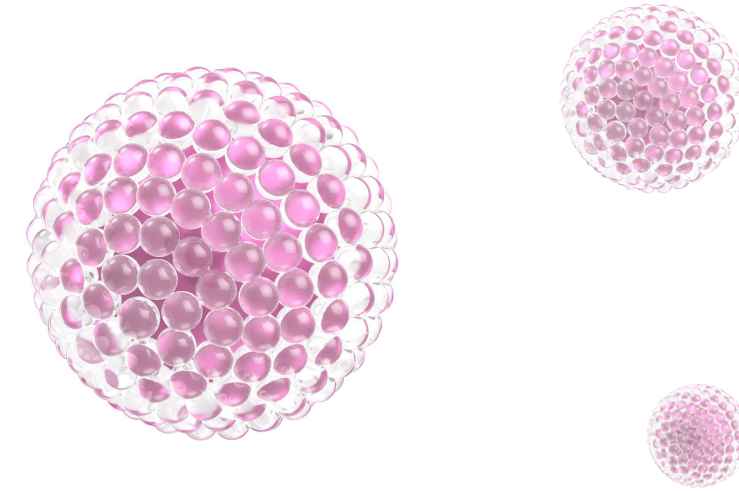
© Dermalogica, 2016
No portion of this manual, or any of the parts thereof,
may be duplicated in any format without prior written
permission from Dermalogica.

age reversal eye complex

training manual

table of contents

Top Skin Aging Concerns Around the Eyes	3
NEW State-of-the-Art Microsphere Technology	4
Key Ingredients	5
Product Details	6
Choosing the Proper Eye Treatment	7
Questions Answers	8



top skin aging concerns around the eyes

Thinner and more delicate than in other areas, the skin around the eyes has fewer natural lipids to help prevent Trans Epidermal Water Loss (TEWL). As a result, it is typically the first area to show these signs of skin aging:

- **Fine lines and wrinkles:** Years of sun exposure, squinting, smiling and free radical damage break down the collagen and elastin fibers that keep skin taut.
- **Dark circles:** Hyperpigmentation, loss of fat, and prominent de-oxygenated blood vessels that are visible through thinner skin contribute to a bluish appearance.

- **Puffiness:** Heredity, fat deposits, hormonal fluctuations, allergies and weather conditions can all promote puffiness, a common manifestation of mild facial edema or excess fluid retention in soft tissue that leads to swelling.

- **A dry, crepey appearance:** The fragile eye area is more prone to dehydration because it has difficulty retaining moisture.

Age Reversal Eye Complex leverages microencapsulation technology along with state-of-the-art firming actives to tackle these signs of skin aging at the source. This potent, multi-benefit formula helps ensure visibly fewer wrinkles, diminished discoloration, smoother and more even texture, and a dramatic improvement in skin tone clarity and firmness.

NEW state-of-the-art microsphere technology for unsurpassed age reversal

When evaluating the effectiveness of a Retinol or Niacinamide product, the stability of these ingredients can be more important than their percentage in the product. This is because unstable molecules can degrade before they have a chance to penetrate the skin.

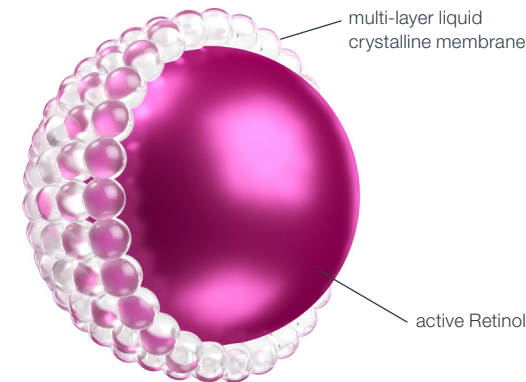
Age Reversal Eye Complex uses special microencapsulation (microsphere) technology to optimize bioavailability of highly-active Retinol and Niacinamide molecules. This technology helps ensure that these molecules remain stable, maintain their concentration levels and have controlled-release delivery¹ to help them penetrate the skin without degrading.

Microencapsulation technology involves placing volatile, oil-soluble ingredients such as Retinol in a lipid microstructure surrounded by a multi-layer liquid crystalline membrane. (See Figure 1.) This allows the Retinol to maintain stability when placed in a water-soluble formula, providing a significant advantage over non-encapsulated or unstable

ingredients in other products on the market.

These microencapsulated ingredients also form an ultra-thin film on the skin that helps reduce TEWL. The non-evaporating water opens the pathways of the stratum corneum so that the microencapsulated Retinol and Niacinamide can release from the film and move deep into the skin layers, where skin lipids are more accepting of the active ingredients.¹ This controlled-release delivery process begins as soon as the product is applied to the skin.

Microencapsulation of stable molecules such as Niacinamide is also important as it ensures a more targeted delivery of the active molecule, for optimum results.



microencapsulated Retinol sphere

Figure 1. A multi-layer liquid crystalline membrane enables controlled release of active, microencapsulated ingredients.

key ingredients

NEW Microencapsulated Retinol 0.1%:

A powerful form of Vitamin A, Retinol possesses remarkable abilities to restore firmness to aging skin. It stimulates cell renewal, increases collagen production,² and reduces the appearance of fine lines and wrinkles.³

NEW Microencapsulated Niacinamide:

Vitamin B₃ stimulates collagen synthesis while reinforcing barrier function of the skin to help reduce TEWL; helps keep fluid from building up in surrounding tissues.; inhibits release of inflammatory mediators; and helps prevent glycation.⁴

NEW Age Reversal Firming Complex

Palmitoyl Tripeptide-5: Conditioning peptides help to reduce wrinkles, impart skin firmness and improve skin tone.⁵

Hyaluronic Acid: This unique cross-linked ingredient and naturally-occurring polysaccharide provides increased hydration and improves elasticity.⁶

Panthenol: Humectant Pro-Vitamin B₅ aids in hydration and skin repair.⁷

Dunaliella Salina Extract: Antioxidant-rich unicellular microalgae helps reverse free radical damage and helps control hyperpigmentation.

Fraxinus Excelsior (Ash Tree) Bark Extract:

Contains Fraxin and Esculin, which present strong vasculo-protective properties. Works with microencapsulated Niacinamide to reduce dark under-eye circles and puffiness.⁸

UGL Complex (Glucosamine HCL, Urea, Yeast Extract and Algae Extract):

Retexturizes skin like an Alpha Hydroxy Acid but at a non-irritating pH,⁹ which is critical for delicate eye area tissue.

ARG-LYS Polypeptide, Soy and White Tea:

This exclusive AGE Smart[®] complex impacts the main biochemical triggers that manifest skin aging – Advanced Glycation End-products (AGEs), Matrix Metalloproteinases (MMPs) and Reactive Oxygen Species (ROS, or free radicals).

Sodium Ascorbyl Phosphate: A stabilized Vitamin C derivative and antioxidant that scavenges free radicals, neutralizes ROS generated by UV exposure and stimulates collagen biosynthesis.¹⁰

Caffeine: Helps address redness and puffiness by constricting capillaries.¹¹

product details



skin condition

Mature or prematurely-aging skin.



description

Reverse multiple signs of skin aging around the delicate eye area with this advanced Retinol treatment. State-of-the-art microsphere technology optimizes bioavailability of Retinol into the skin to help reduce the appearance of fine lines while microencapsulated Niacinamide and Ash Tree Bark Extract maintain hydration and reduce visible dark circles. A powerful Age Reversal Firming Complex works synergistically with antioxidant Vitamin C, powerful peptides and botanical extracts to fortify and smooth skin.



key products to prescribe

Dynamic Skin Recovery SPF50, Power Rich™, SkinPerfect Primer SPF30



application

- Recommend clients start using alternate nights, for the first two weeks. If no irritation develops, use nightly.
- After cleansing, smooth and pat around the eye area, working from the outer corner inward. Use caution near the lash line. Avoid contact with the eyes.



contraindications

- Discontinue use of exfoliating products around the eye area for three days prior to initial application.
- If client is pregnant or breastfeeding, have them consult a physician prior to use.
- Do not use within 72 hours of waxing or exfoliation.
- Advise client to wear sunscreen over treated area during the day.

choosing the proper eye treatment

product	best for	benefits
 Total Eye Care SPF15	All skin conditions.	<ul style="list-style-type: none"> • Protects the delicate eye area during the day. • Conceals dark circles. • Smooths fine lines.
 Intensive Eye Repair	Dry, dehydrated skin.	<ul style="list-style-type: none"> • Infuses skin with hydration. • Reduces visible fine dehydration lines. • Defends skin with antioxidants.
 MultiVitamin Power Firm	Prematurely-aging skin.	<ul style="list-style-type: none"> • Firms loose skin around the eyes. • Repairs signs of skin aging with multivitamins. • Excellent as an eye make-up primer.
 UltraSmoothing Eye Serum	Sensitized, reactive and recently resurfaced skin.	<ul style="list-style-type: none"> • Soothes irritated skin on contact. • Helps minimize puffiness. • Lightweight formula absorbs quickly.
 Age Reversal Eye Complex	Mature skin requiring retexturization.	<ul style="list-style-type: none"> • Delivers potent age-fighting actives deep into skin. • Reverses multiple signs of skin aging overnight. • Tightens, hydrates and smooths all at once.

questions | answers

When during their regimen should a client apply Age Reversal Eye Complex?

Age Reversal Eye Complex is a highly-active eye treatment that should be applied on clean skin at night so that it works in concert with the body's internal cellular repair schedule.

How should I prescribe Age Reversal Eye Complex with other targeted treatments?

Based on your client's Face Mapping® skin analysis, Age Reversal Eye Complex can be prescribed with other AGE Smart® treatments, including Overnight Retinol Repair, to address multiple signs of skin aging.

Will the Retinol be irritating to my clients with sensitized skin?

Advise your clients to build up a tolerance to Retinol by using the product every other night for the first two weeks. If irritation occurs, they may discontinue use and/or switch to a different Dermalogica Eye Treatment (see p. 7).

How soon will clients see results?

Everyone's skin is different, but most people will experience smoother skin within a few days of use. As skin acclimates, typically within two weeks, your clients will start to notice improvements that will continue over time.

Should clients increase daily sun protection while using this product?

Yes. Retinol can make skin more sensitive to the sun, so it is imperative for your clients to wear a sunscreen with a minimum of SPF30 every day while using Age Reversal Eye Complex.



citations

1. Jung A. Kemspheres Delivery System for Active Ingredients. Oberhausen Technology Center. Germany. Jan 2010.
2. Voorhees JJ, Kang S, et al. Improvement of naturally aged skin with vitamin A (retinol). Arch Dermatol. 2007;143:606-612.
3. Bellemère G, Stamatias GN, Bruère V, Bertin C, Issachar N, Oddos T. Antiaging action of retinol: from molecular to clinical. Skin Pharmacol Physiol. 2009;22(4):200-209.
4. Del Rosso JQ, et al. J Clinical Aesth Derm. Feb 2010;3(2):22.
5. DSM Centerchem. Syn®-Coll Technical Data Sheet 2013.
6. Pavicic T, et al. J Drugs Dermatol. 2011 Sept; 10(9):990-1000.
7. Jenkins J. Panthenol and Your Skin – What You Need to Know. ezinearticles.com. Feb. 9, 2007; <http://ezinearticles.com/?Panthenol-and-Your-Skin--What-You-Need-to-Know&id=447783>
8. Gattefosse Technical Data Sheet for Cytobiol™ Lumin-Eye.
9. Barrett Technical Data Sheet. UGL Complex. 2002.
10. Spiclin P. Int J Pharm. 2003 Apr 30;256(1-2):65-73.
11. George S. Caffeine & Puffy Eyes. Livestrong.com. July 10, 2011; <http://www.livestrong.com/article/489025-caffeine-puffy-eyes>.